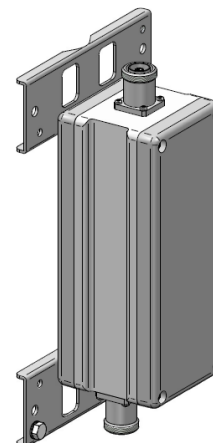


DS19367  
October 2018

### ***BENEFITS***

- **Very compact**
- **TMA-S (receive only), TMA-D (includes duplexer)**
- **Variable gain set through web-server and SNMP**
- **Integrated surge protection**



### ***DESCRIPTION, TMA***

The TMA system from Combilent is very compact and designed to work with TETRA base stations with cavity combiners improving the coverage by compensating for the link balance and feeder cable losses.

The system includes TMA-S (receive only), TMA-D (including duplexer), and Power Distribution Unit (PDU)

The TMA includes by-pass mode in case of no DC power or amplifier failure.

### ***Product availability:***

- Frequency bands: 340-470 MHz, 700 MHz, 800 MHz, 900 MHz
- Band width / duplex spacing: 2.5/5 MHz; 5/10 MHz; full band (7/8/900 MHz)
- Operation: Rx below Tx or Tx below Rx
- Other frequency bands on request

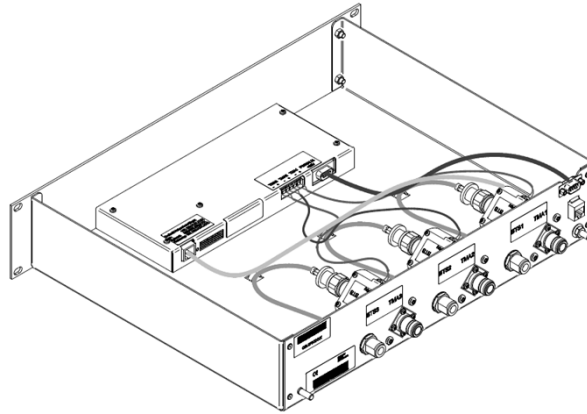
DS19367  
October 2018

### **PERFORMANCE CHARACTERISTIC, TMA-S and TMA-D**

Specifications apply across the operating temperature range and frequency band unless otherwise stated.

<b>Parameter</b>	<b>Specification</b>
Tx insertion loss	<1.5 dB (TMA-D 5 MHz BW) <2.0 dB (TMA-D 2.5 MHz BW) <1 dB (TMA-D 7/8/900 MHz)
Tx selectivity in Rx-band	>65 dB (TMA-D)
Tx power handling	8*43 dBm TETRA carriers
Rx-gain	3-12 dB in 1 dB steps
Rx noise figure	<2.5 dB (TMA 5 MHz BW) <3 dB (TMA 2.5 MHz BW) <2 dB (TMA 7/8/900 MHz) at 25°C, <2.2 dB at 60°C
Rx IIP3	>+5 dBm
Rx selectivity in Tx-band	>65 dB (TMA-D); >65 dB (TMA-S)
By-pass loss	<2.5 dB
Power supply	+12V DC on feeder to TMA from PDU
Operating temperature range	-45°C to +60°C
Connectors, TMA	Tx, Rx, ANT: 7-16 female
Dimensions and weight	TMA-S: 100*245*100 mm, 4 kg TMA-D: 160*285*100 mm, 6 kg
MTBF system (2*TMA + PDU)	576,923 hours

DS19367  
October 2018



### ***DESCRIPTION, PDU***

The PDU controls and monitors the status of the TMAs and provides alarm to the base station.

The PDU includes a web-server for easy monitoring and configuration as well as SNMP.

### ***PERFORMANCE CHARACTERISTIC, PDU***

Specifications apply across the operating temperature range and frequency band unless otherwise stated.

<b>Parameter</b>	<b>Specification</b>
No. of TMA connections	1, 2, or 3
Frequency	350-1000 MHz
Insertion loss	<0.3 dB
Return loss	>20 dB
Power supply	20-30 VDC
Power consumption	100 mA + 100 mA pr. TMA
Operating temperature range	-20°C to +65°C
Connectors	TMA and BTS side: N-female
Interface	RJ45, DC power, alarm relay
Dimensions and weight	19", 2U, 5 kg